

MECHANICAL BRAKE

MEDIUM DUTY

1100M

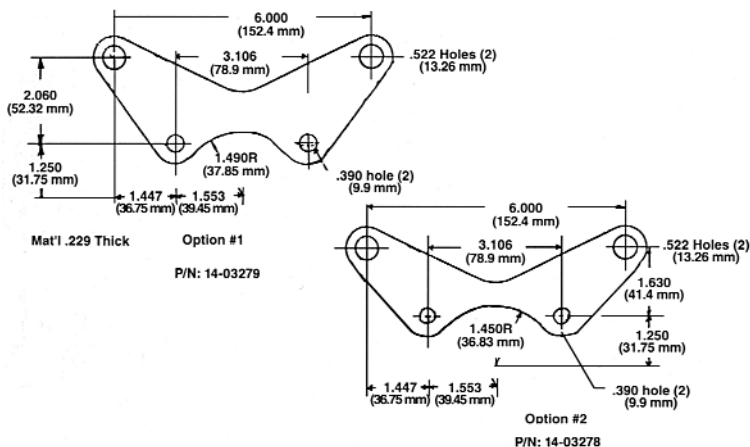
FEATURES:

- Capable of 900 lbs. of clamp force.
- Economical heat treated stamped steel construction.
- Zinc finish resists rust and corrosion.
- Large friction area for extended pad life.
- Can be fixed or floating mounted.
- Mount bracket optional.
- Choice of CW and CCW lever actuation.

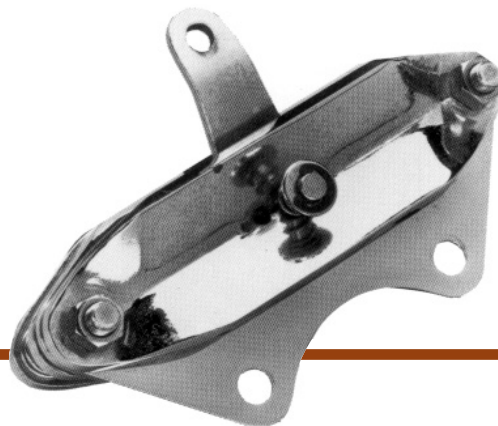
TYPICAL SPECIFICATIONS:

Series	1100M
Rotor Diameter	5 to 8 in.
Rotor Thickness	0.156 to 0.188 in.
Maximum Lever Force @ 2.10" Hole	300 lbs.
Lever Position	0 or 180 degrees
Lining Type	non asbestos organic
Total Lining Area	11 sq.in.
Usable Lining Thickness Per Pad	0.130 in.
Weight Without Bracket	2.73 lbs.

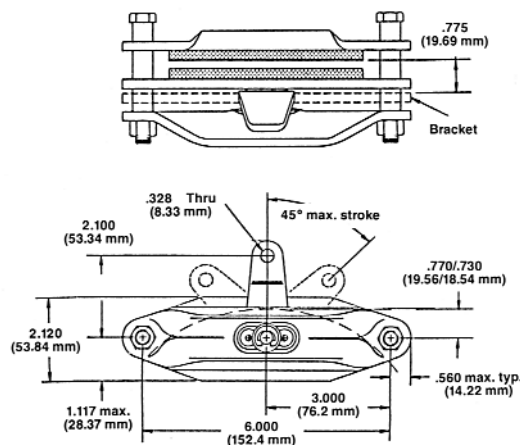
AVAILABLE BRACKET CONFIGURATION:



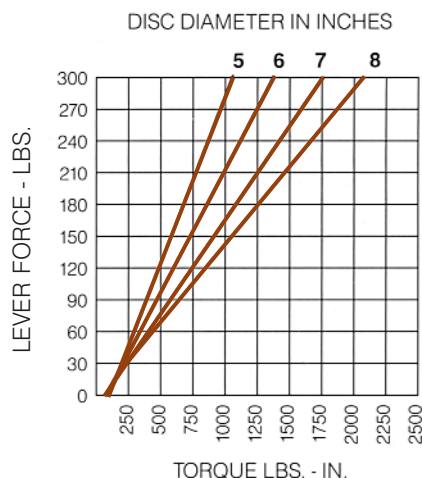
Specifications are guidelines only and subject to change. Consult HB for specific model, part number and assembly drawings.



REFERENCE DIMENSIONS:



TORQUE INFORMATION:



$$\text{Formula: } T = 6 \mu F \left(\frac{\text{DIA}}{2} - 0.687 \right) \text{ for 2.100" Lever}$$

T = developed torque in lbs.-in. DIA = diameter of rotor in inches
 F = applied lever force in lbs. μ = friction coefficient, assume 0.35



HB Performance Systems Inc.
 5800 West Donges Bay Road
 Mequon, Wisconsin 53092
 Phone (262) 242-4300
 Fax (262) 242-0524
 www.hbpsi.com

Printed in USA