

MECHANICAL BRAKE

SPRING APPLIED HYDRAULIC RELEASE

M100SH

FEATURES:

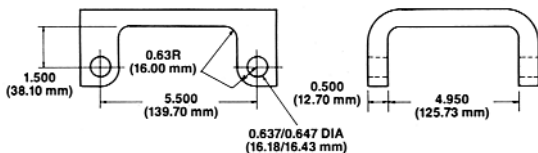
- Capable of 10,000 lbs. of clamp force.
- Self adjusts for friction pad wear.
- Fully assembled with spring chamber capable of being rotated in 90 degree increments.
- Quick change pads, retained by mount pins.
- Fully sealed internal ball ramp mechanism.
- Capable of a 40 millisecond response time.
- Spring will have less than 2% creep in normal applications.
- Mechanical released using a wrench on chamber pull rod.

TYPICAL SPECIFICATIONS:

Series M100SH
 Rotor Diameter 10 in. and up
 Rotor Thickness 0.500, 0.625, and 0.750 in.
 Brake Hold Off 995 psi hyd.
 Max Hydraulic Pressure 3,675 psi hyd.
 Lining Type non asbestos organic or sintered
 Total Lining Area 14.8 sq. in.
 Usable Lining Thickness Per Pad 0.47 in.
 Chamber Mounting 90 deg. increments
 Housing nodular iron
 Weight 48 lbs.

Note: Consult HB about other chamber to caliper orientations.

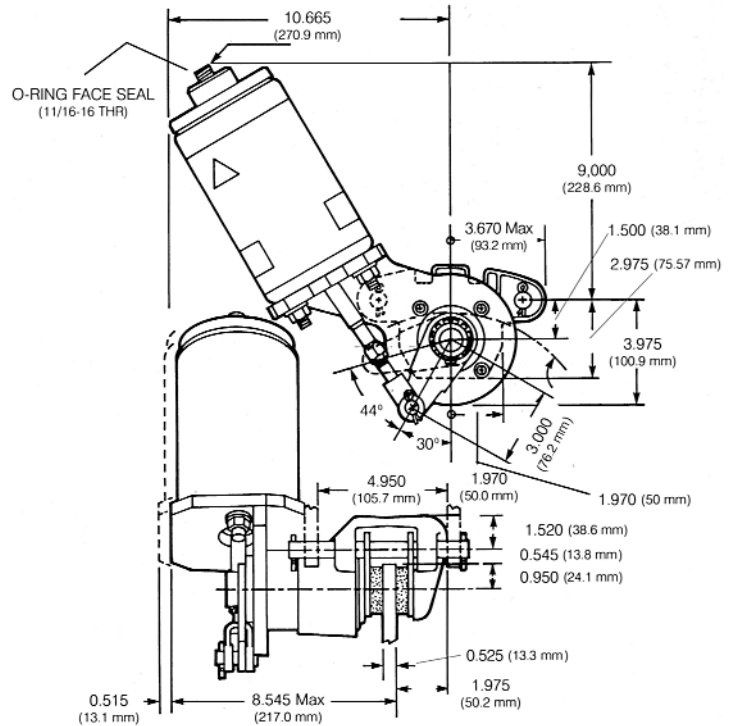
TYPICAL BRACKET CONFIGURATION:



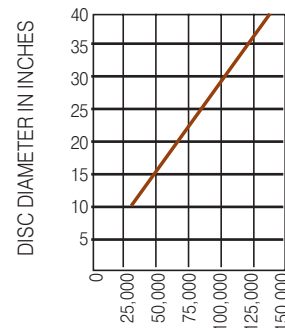
Specifications are guidelines only and subject to change. Consult HB for specific model, part number and assembly drawings.



REFERENCE DIMENSIONS:



TORQUE INFORMATION:



$$\text{Formula } T = 2 \mu F \left(\frac{\text{DIA}}{2} - 1.0 \right)$$

T = developed torque in lbs.-in. DIA = diameter of rotor in inches
 F = 10,000 pound clamp force μ = friction coefficient, assume 0.35



HB Performance Systems Inc.
 5800 West Donges Bay Road
 Mequon, Wisconsin 53092
 Phone (262) 242-4300
 Fax (262) 242-0524
 www.hbpsi.com

Printed in USA