

# MECHANICAL BRAKE

## SPRING APPLIED AIR OR HYDRAULIC RELEASED

### M100SA

#### FEATURES:

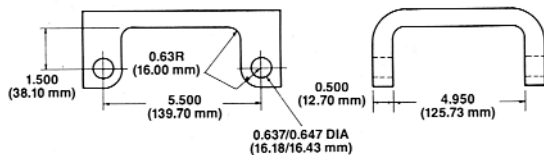
- Capable of 10,000 lbs. of clamp force.
- Self adjusting for friction pad wear.
- Fully sealed internal ball ramp mechanism.
- Fully assembled, with air chamber mounted for either CW or CCW operation.
- Quick change pads, retained by mount pins.
- Fast response-capable of 100 milliseconds.
- Chamber can be positioned in 90 degree increments.
- Mechanical release using a wrench.

#### TYPICAL SPECIFICATIONS:

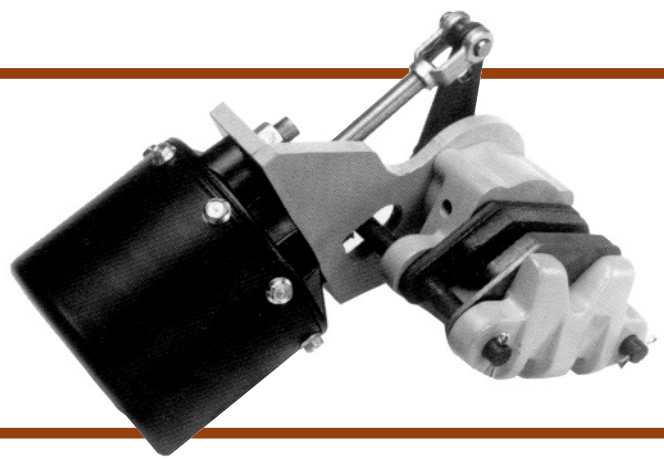
Series .....	M100SA
Rotor Diameter .....	10 in. and up
Rotor Thickness .....	0.500 to 0.750 in.
Brake Hold Off .....	40 PSI of air or hyd.
Maximum Chamber Rating .....	125 PSI of air or hyd.
Lining Type .....	non asbestos organic or sintered
Total Lining Area .....	14.8 sq. in.
Lining Thickness Per Pad .....	0.470 in.
Chamber Mounting .....	90 degree increments
Housing .....	nodular iron
Weight .....	36.5 lbs.

**Note:** Consult HB about alternate chamber orientations.

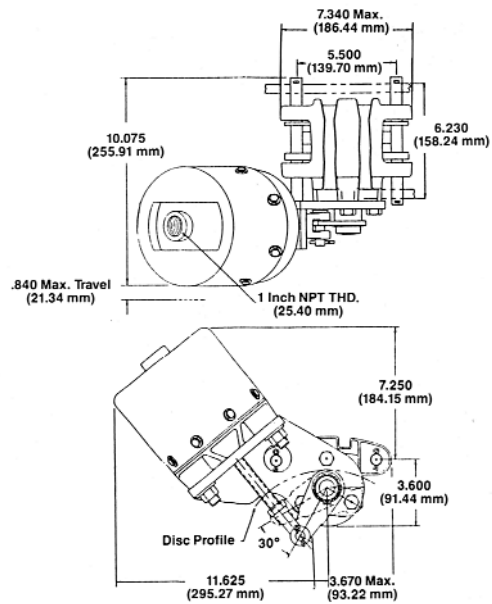
#### TYPICAL BRACKET CONFIGURATION:



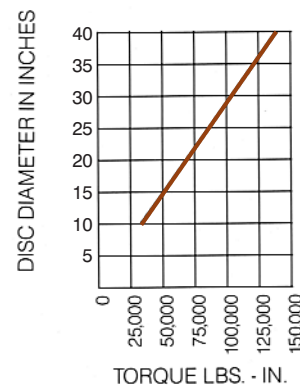
Specifications are guidelines only and subject to change. Consult HB for specific model, part number and assembly drawings.



#### REFERENCE DIMENSIONS:



#### TORQUE INFORMATION:



$$\text{Formula: } T = 2 \mu F \left( \frac{\text{DIA}}{2} - 1.0 \right)$$

T = developed torque in lbs.-in.  
F = 10,000 lbs. of clamp force

DIA = diameter of rotor in inches  
 $\mu$  = friction coefficient, assume 0.35



HB Performance Systems Inc.  
5800 West Donges Bay Road  
Mequon, Wisconsin 53092  
Phone (262) 242-4300  
Fax (262) 242-0524  
www.hbpsi.com

Printed in USA