

HYDRAULIC BRAKE

MEDIUM DUTY COMPACT

1-41-1S

FEATURES:

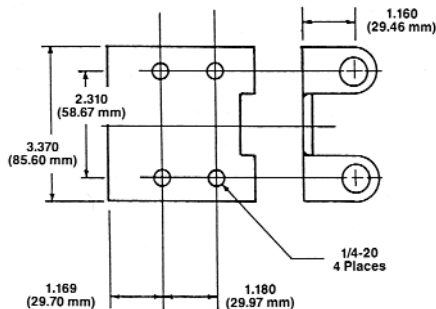
- Capable of 3,100 lbs of clamp force.
- Economically constructed with die cast aluminum housing.
- Square seal piston retraction for constant running clearance.
- Three bleeder and inlet options for mount flexibility.
- Available for either hydraulic or brake fluid application.
- Various brackets available.

TYPICAL SPECIFICATIONS:

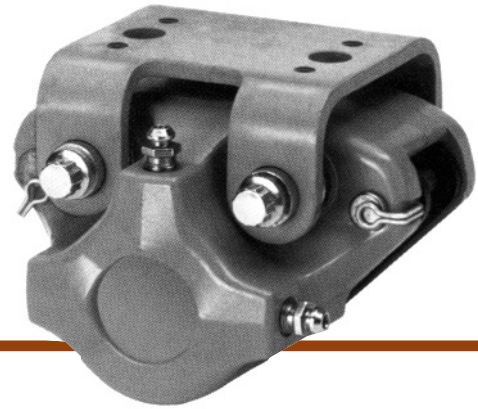
Series	1-41-1S
Rotor Diameter	6 to 20 in.
Rotor Thickness	0.100 to 0.375 in.
Piston Diameter	1.622 in.
Maximum Hydraulic Pressure	1500 psi
Fluid Displacement @ 1500 PSI	0.081 cu. in.
Fluid Type	Brake Fluid DOT 3 & 5 or Hydraulic Oil
Fluid Inlet	3/8-24 thread with 3/16" inverted flare
Bleeder (either side)	3:00, 9:00 or 12:00
Lining Type	non-asbestos organic or sintered
Total Lining Area	7.30 sq. in.
Usable Lining Thickness Per Pad	0.175 in.
Weight With Bracket	4 lbs.

Note: The same seals cannot be used for both Brake and Hydraulic fluid. Either Brake or Hydraulic fluid must be specified.

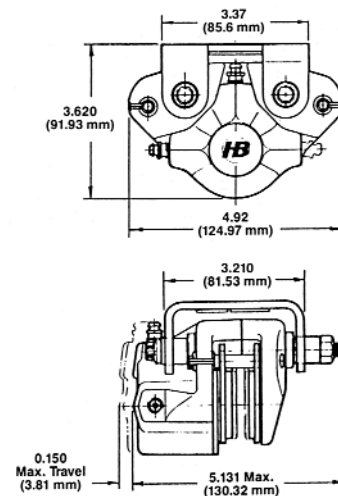
STANDARD MOUNT BRACKET:



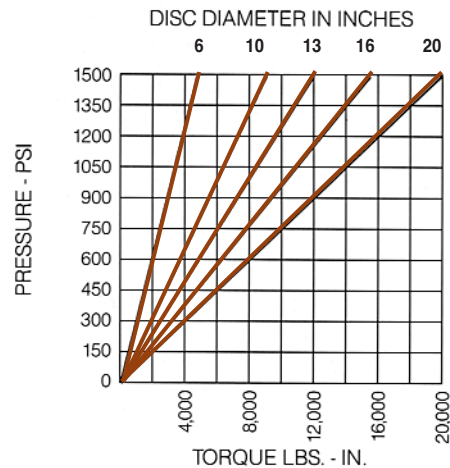
Specifications are guidelines only and subject to change. Consult HB for specific model, part number and assembly drawings.



REFERENCE DIMENSIONS:



TORQUE INFORMATION:



$$\text{Formula: } T = 4.14 \mu P \left(\frac{\text{DIA}}{2} - 0.95 \right)$$

T = developed torque in lbs-in. DIA = diameter of rotor in inches
 F = applied lever force in lbs. μ = friction coefficient, assume 0.35



HB Performance Systems Inc.
 5800 West Donges Bay Road
 Mequon, Wisconsin 53092
 Phone (262) 242-4300
 Fax (262) 242-0524
 www.hbpsi.com

Printed in USA